

AD963FD9 Assembly Guide

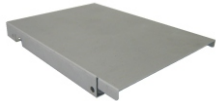
Before Assembling:

1. Please check the accessory list before assembly. Contact your local dealer if you find any parts missing.
2. Please read through the assembly guide.

2.5" Aluminum Housing



Top side

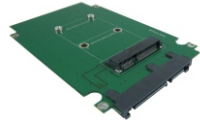


Bottom side

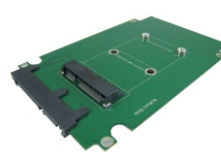
AD963FD9 Adapter



Top side



Bottom side



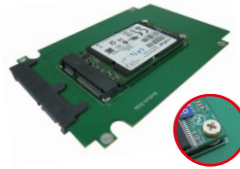
Step 1



Step 2



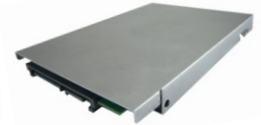
Step 3



Step 4



Step 5



Step 6

Accessory Package

(1)M2x3 Screw *3pcs
P/N: 13MISW00005M11



[for Full size SSD]

(2)M2x6mm(H) screw *3pcs
P/N: 13MISW00001M05



[for Half size SSD]

(3)Copper Nut /H: 4.0mm *3pcs
P/N: 13MICA00001M05



[for Half size SSD]

(4)M2 nut *3pcs
P/N: 13MINU00001M11



[for Half size SSD]

(5)M2x3 screw *5pcs
P/N: 13MISW00005M11



[for 2.5" Housing]

The above accessories parts are all have extra 1pc for spare part.

Step 1:Bottom side up the adapter.

Step 2:Insert mSATA SSD into mini PCI-e socket.

Step 3:Press down mSATA SSD and aim to the copper nuts holes.

Step 4:Fixed mSATA SSD with (1)M2x3 on the adapter.

Step 5:Turn down the adapter and assemble into 2.5" aluminum housing, fixed with (5)M2x3 screw .

Step 6:Turn down the complete 2.5" SSD (mSATA+adapter+2.5" housing), assemble it into laptop or desktop PC.

(If your mSATA SSD is half size, pls use 2pcs of extra spare copper nuts to fix.)